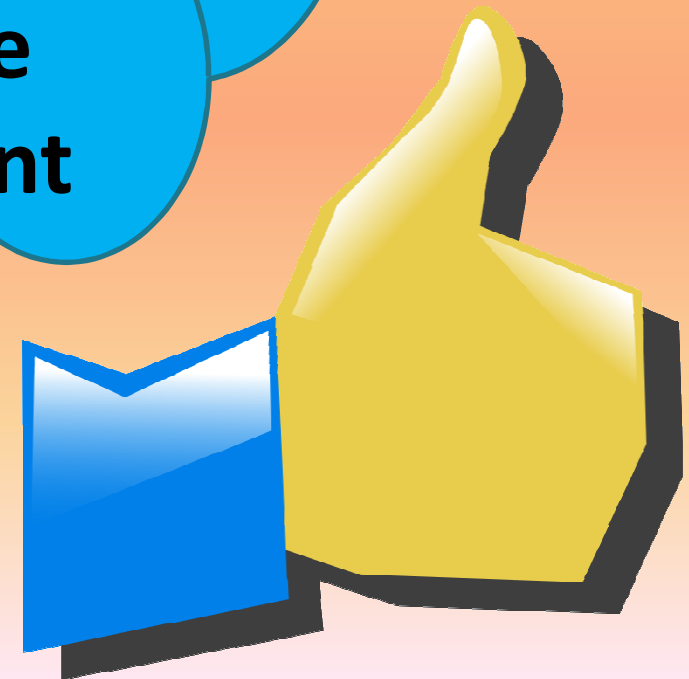




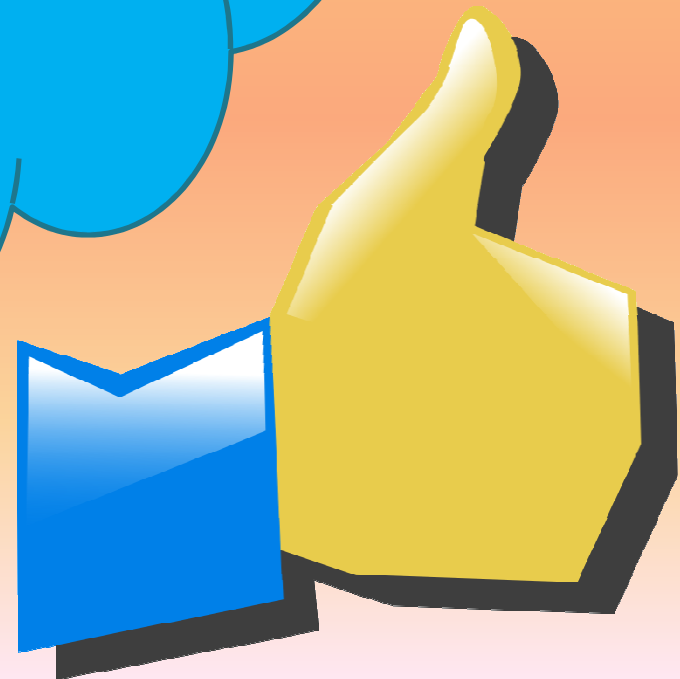
# Corporate Parenting Board Performance Report

**Our key comments  
include.....**

**A referral is  
information received  
regarding a child that  
is deemed to require  
social care  
involvement**



**A contact is any  
information received  
that doesn't lead to a  
referral**



**The contact centre  
has received more  
contacts though  
less referrals have  
been made**





**Does this mean  
that it is harder  
to get a young  
person referred  
into children's  
social care?**

**Re-referral rate has  
continued to  
decline to less than  
16 out of each 100  
referrals received**





**6 out of 10 Looked  
After Children have  
moved twice or  
more during the past  
year**

**LINX would  
like this figure  
to be lower  
still**





**There is no data on  
stability of placements  
since March this year**

**It would be  
good to have  
this data**



**There is no data on  
children missing from  
care this year**

**It would be  
good to have  
this data too**



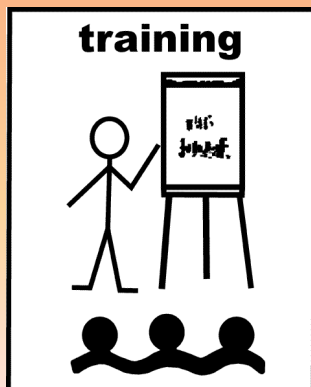
**Looked After Children achieving  
grades A\* -C in GCSEs including  
Maths and English increased from  
8% to 14% in 2014-2015**



**This is still much lower  
than their peers where  
almost 60% achieve  
grades A\* -C in GCSEs  
including Maths and  
English**



**In July 2016 41% of care leavers were in education, employment or training**



**This compares badly with 88%  
of all 16-24 year old in England  
who are in education,  
employment or training**



**In 2014/2015, 40 care leavers  
were studying at University  
compared with 36 the previous  
year**



**In August 2016  
there were 5  
looked after  
young people  
placed in young  
offender  
institutions or  
secure units**





**Looked After  
Children are 25  
times more  
likely to be  
involved with  
Youth Offending  
Teams**



**The End**